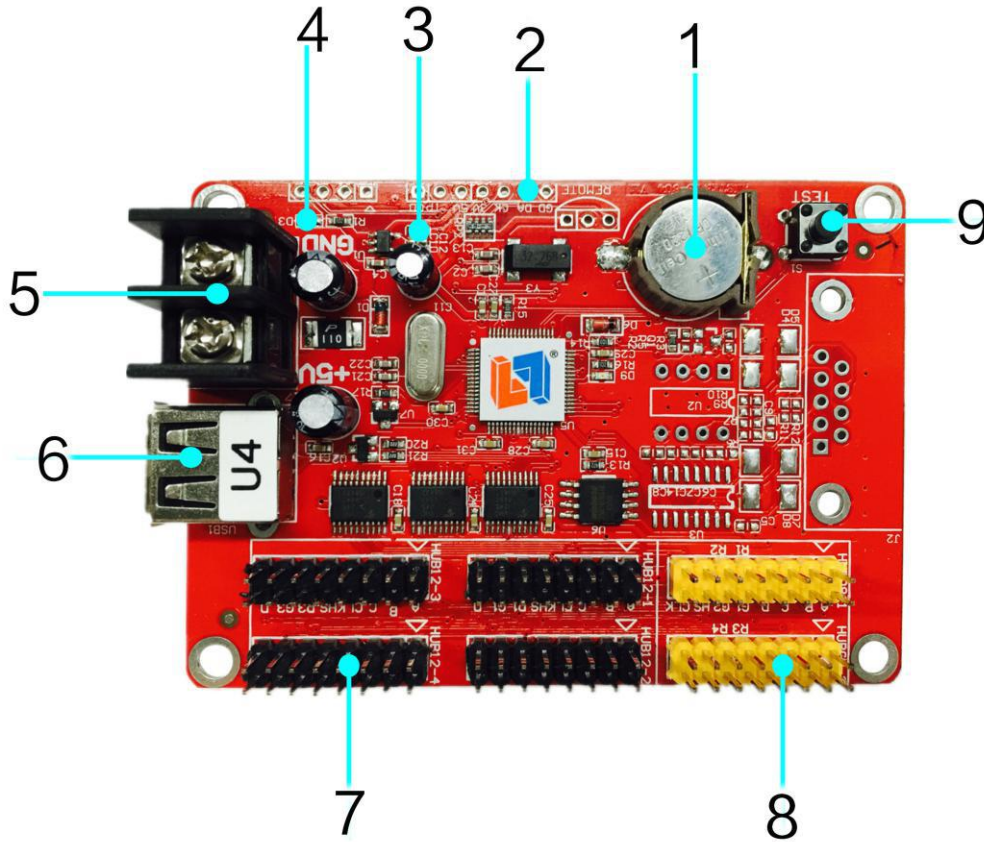


SPECIFICATION FOR U4

Version	Date	Reason
V2.00	07/08/2015	Document

Hardware



Number	Name	Description
1	RTC Button Battery	RTC supplying battery, voltage3V
2	Sensor Interface	Connect temperature sensor
3	Operation Light	Show operating status
4	5V power Light	Show power status
5	5V Power Port	Wide voltage 3.5V-6V
6	USB Interface	USB interface
7	HUB12 Interface	Connect HUB12 Interface
8	HUB08 Interface	Connect HUB08 Interface
9	Multi-functional Button	Functions : 1.test LED screen 2.factory data reset

Product Parameters

Storage	2MByte
Application	All LED screen
Pixels	Single 64K pixels double 32K pixels
Load	single:2048*16 2048*32 1344*48 1024*64 Double:2048*16 1024*32 672*48 512*64
Software Function	Cluster management, Multi-area, multi-language
Programs	128programs, each has 16 areas
Area Type	Image & text/subtitle/animation/time/analog clock/count up & down/temperature
Frame	Program water frame/area water frame
Clock	Digit clock/analog clock/count up & down
Communication Interface	USB Interface, 100M Ethernet Interface
Display Interface	2*HUB08 , 4*HUB12
Sensor	Temperature sensor
Brightness Adjustment	16 level , adjust brightness automatically or via software on time sharing
Remote Control	Switch on & off automatically or via software
Voltage	3.5V~6V
Max Power	< 1W
Temperature	-40℃-85℃
Secondary Development	DLL dynamic library
Auxiliary Software	LED Player 6.0

Dimension Drawing

